

CHICO UNIFIED SCHOOL DISTRICT

REVIEW OF TRUSTEE AREA ESTABLISHMENT PROCESS in CUSD

SEPTEMBER 1, 2021

Presented by:

Paul R. Gant, Partner, Kingsley Bogard
Jamie King-Iseman, President, King Consulting
Rob Murray, Director, King Consulting



Agenda

- **Kingsley Bogard**
 - *Discussion of CVRA from Legal Counsel*
- **King Consulting**
 - *CVRA Process 2020*
 - Introduction of Firm and Services
 - Review of Initial Data and Findings
 - Review of CVRA Timeline and Criteria
 - Review of Initial Draft Trustee Area Maps and Data
 - Summary and Considerations

Legal Discussion

California Voting Rights Act (CVRA)

- CVRA took effect **January 1, 2003**.
- CVRA **prohibits at-large elections** when this system produces racially polarized voting results, or in other words, when a protected class is impaired in its ability to elect candidates of its choice or influence the outcome of an election because of the dilution of the rights of voters within that class.
- **February 19, 2020** Chico USD announced its intention to transition to By-Trustee Area elections on.
- After a necessary delay during the Governor's Emergency Order due to the COVID-19 pandemic, and with 2020 Census data to be released this month, **the process is ready to recommence**.

Requirements & Other Considerations

Legal Requirements

- Nearly equal population (+/- 5%) based on 2020 U.S. Census data
- Complies with Federal Voting Rights Act
- Cannot be drawn with race as predominant factor (no racial gerrymandering)

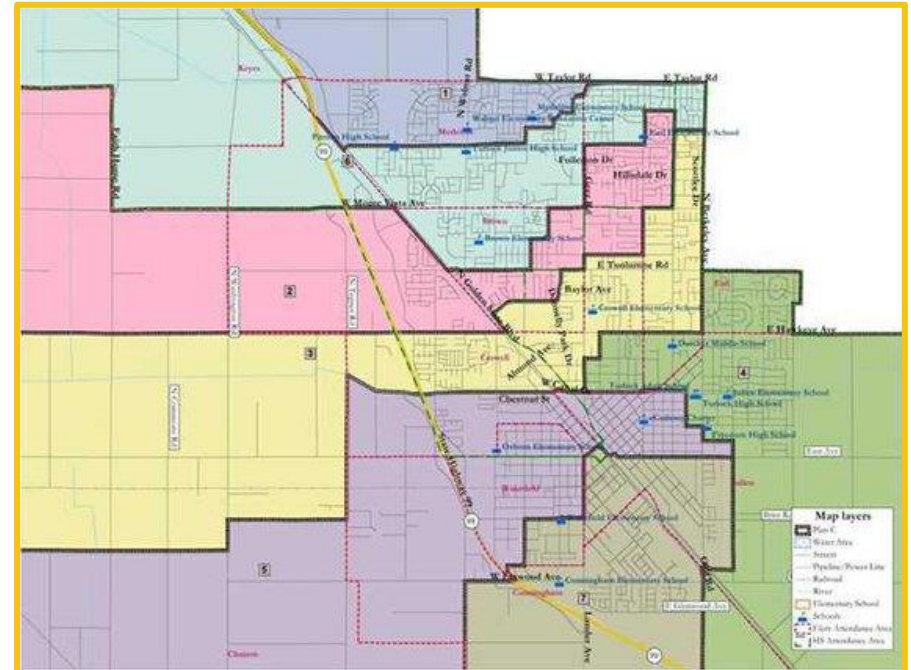
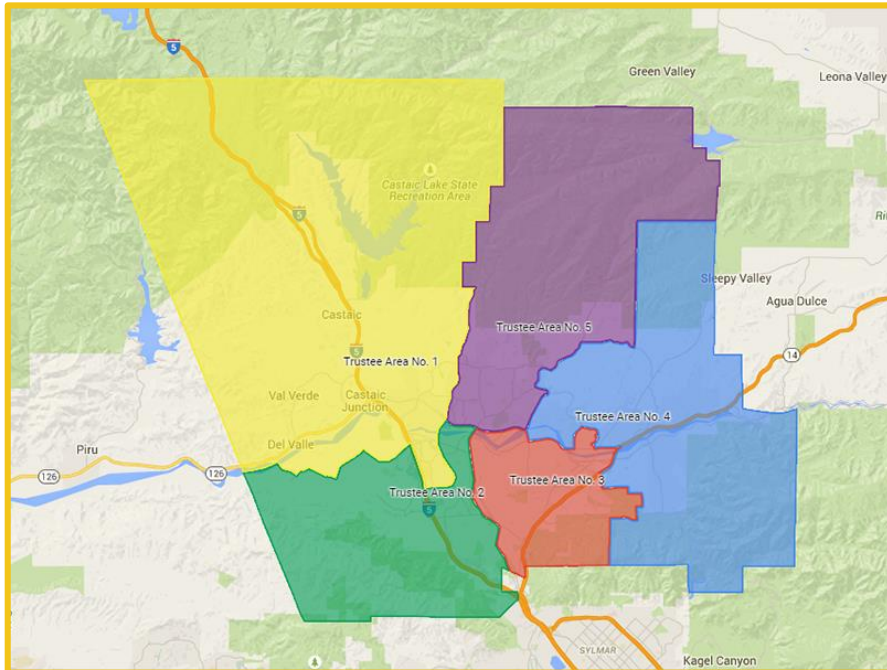
Traditional Considerations

- Communities of Interest
- Compact
- Contiguous
- Natural boundaries

Examples of Trustee Areas

Generally, trustee area maps are as compact as possible, with shapes of trustee areas driven by population requirements and other communities of interest.

However, non-compact trustee areas might be considered for policy-driven reasons, usually the desire for each trustee area to include, for example, rural areas, downtown areas, or multiple high school boundaries.



California Voting Rights Act Process 2020

Overview of Firm & Services

- **Small, local consulting firm providing services to CUSD since 2004.**
- **Capital Facility Funding Services**
 - *State School Facility Program: The total sum of all applications previously submitted and awarded, being processed, on the workload list, or in progress to be submitted is **\$48,153,531**.*
 - *Developer Fees: Study in Progress*
 - *Other Funding (CalSHAPE, FEMA, etc.)*
- **Demographics and Planning Services**
 - *Demographic Analysis and Student Housing Report*
 - *Boundary Analysis and Adjustments*
 - *California Voter Rights Act*
 - *Other Services*



Review of Initial Data and Findings

Analysis of CUSD Election Results 2004-2018

King Consulting reviewed Chico USD election results to assess any history of racially polarized voting.

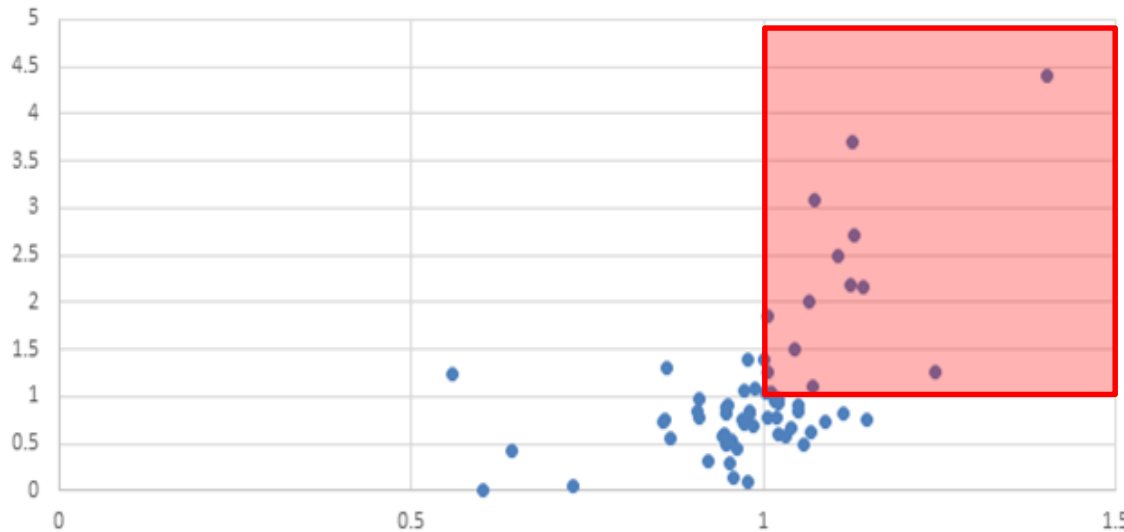
The California Elections Code § 14026(e) defines “racially polarized voting” as:

“difference. . . in the choice of candidates and electoral choices that are preferred by voters in a protected class, and in the choice of candidates and electoral choices that are preferred by voters in the rest of the electorate.”

Election data demonstrates multiple instances of Hispanic/Latinx voters disproportionately supporting a candidate who did not win a seat in the at-large election.



Example of Potentially Polarized Voting



*Proportion of
Hispanic/Latinx voters:
1 = CUSD average*



*Candidate vote share:
1 = CUSD average*

Review of CVRA Timeline and Criteria

Original Timeline for Transition to District-Based Elections

Date	Action
February 19, 2020	Governing Board adopted Resolution of Intent
March 4, 2020	First Public Input Hearing was held
March 11, 2020	Second Public Input Hearing was held
April 1, 2020	Initial Draft Trustee Area Map Options were presented to Board and published
April 15, 2020	First Hearing on Published Maps was postponed pursuant to Executive Order Nos. N-34-20, N-48-20

Criteria Discussed in Public Meetings

Legal Requirements

1. CUSD has one area with a relatively high and geographically concentrated Hispanic/Latino population, which under the CVRA cannot be split between multiple Trustee Areas.
2. Each Trustee Area must contain between 20,365 and 22,508 persons as recorded in the 2010 Decennial United States Census.

Community Input

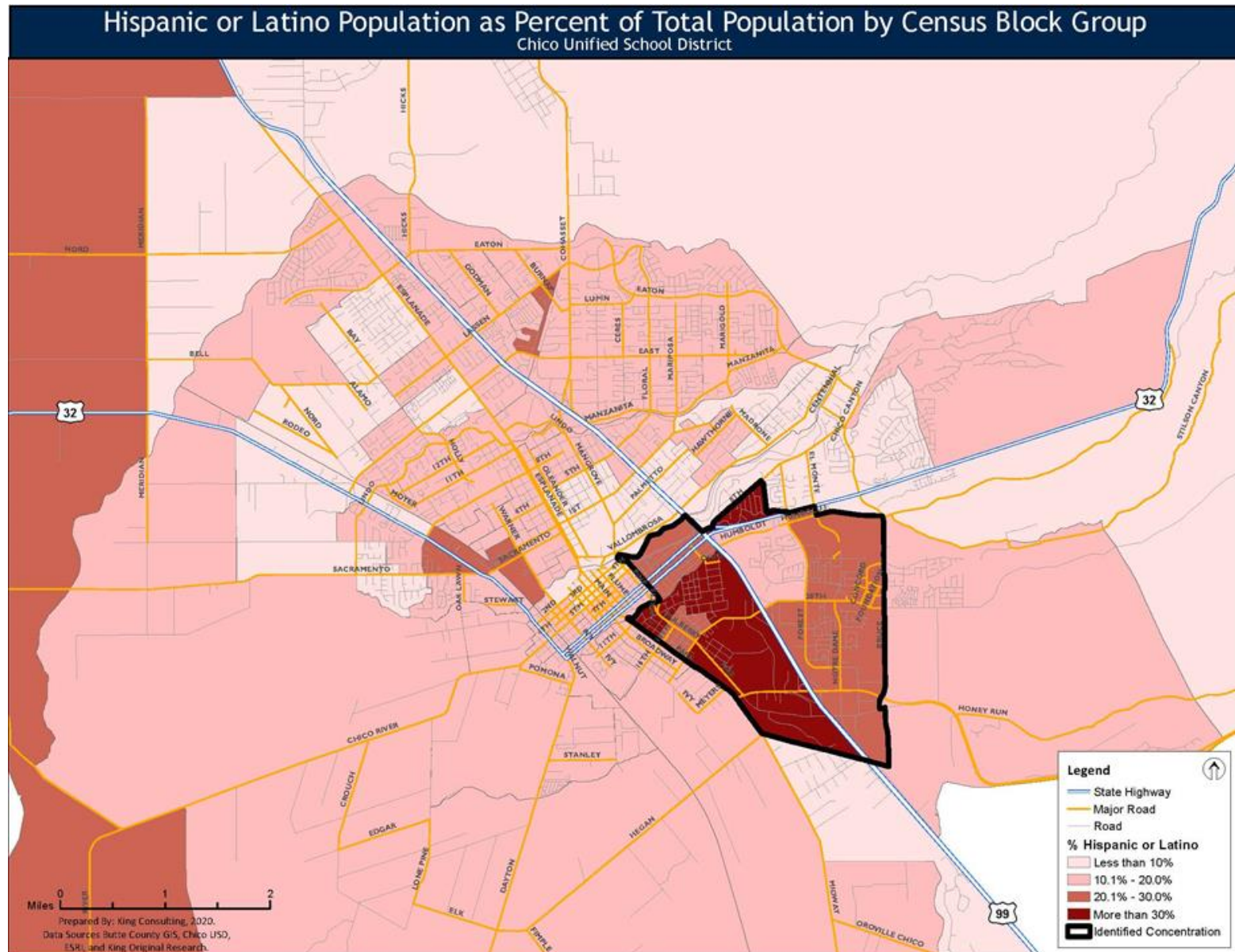
1. Speakers raised support for Trustee Areas that each cover both high school attendance boundaries
2. Trustee Areas that are entirely within one high school attendance boundary or the other.
3. Several neighborhoods were identified as “communities of interest” to be kept together in a single Trustee Area:

Barber, Chapmantown, South Campus, The Avenues

4. Trustee Areas should be as balanced as possible from a socioeconomic standpoint.



CUSD Hispanic/Latino Concentration



Review of Initial Draft Trustee Area Maps and Data

Initial Draft Trustee Area Map Options

- Three initial draft maps were created:

Blue: Creates trustee areas within high school boundaries

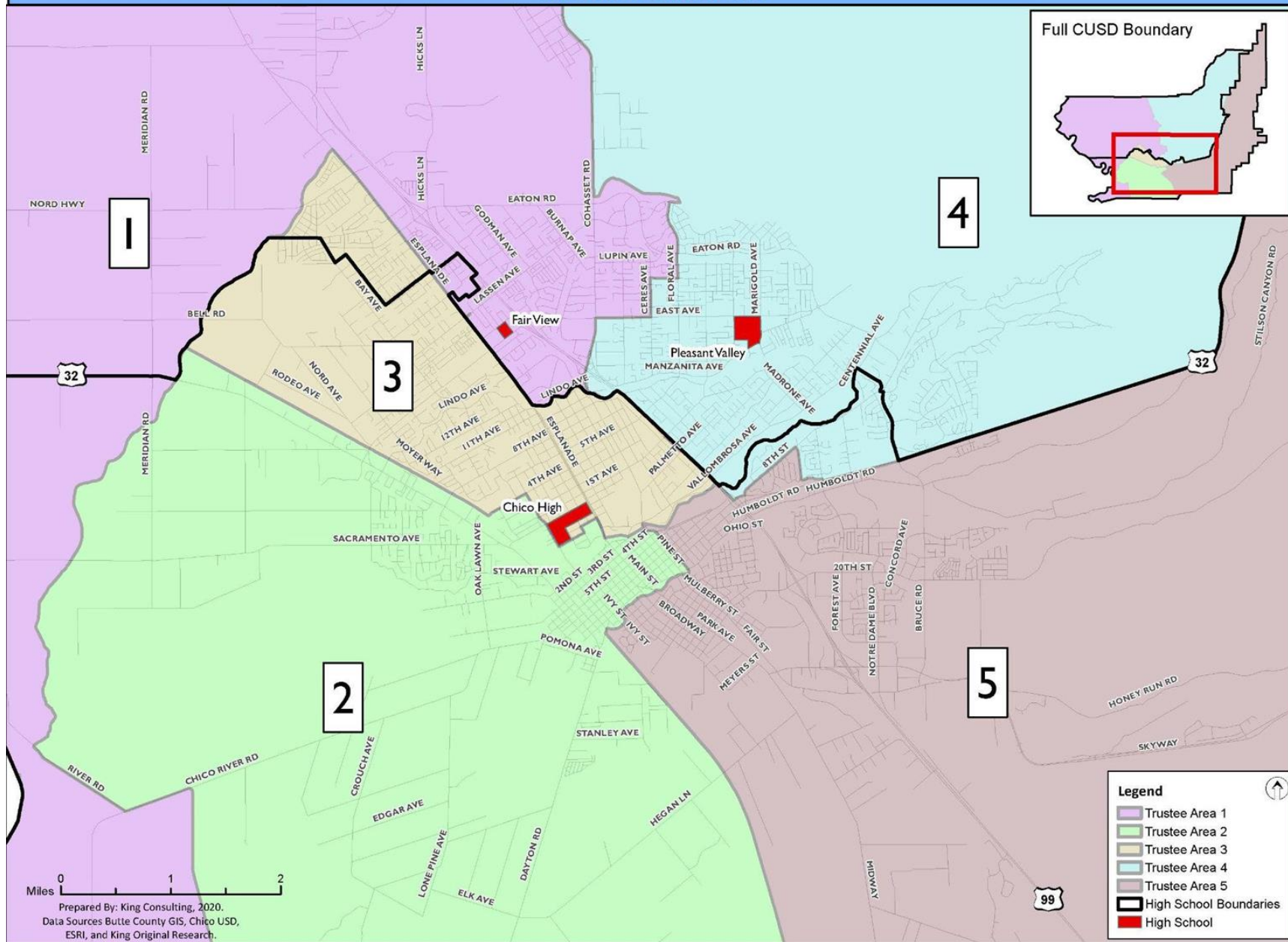
Green: Each trustee area covers both HS boundaries

Purple: Groups neighborhoods identified in community outreach

- These maps, along with key demographic information, were presented to the CUSD Board of Education on **April 1, 2020**.
- The maps and data were also posted to the District's By-Trustee Area Election System webpage.
- **No revised maps were produced prior to the postponement of the process on April 15, 2020.**

Draft Trustee Area Map: Blue Plan

Chico Unified School District



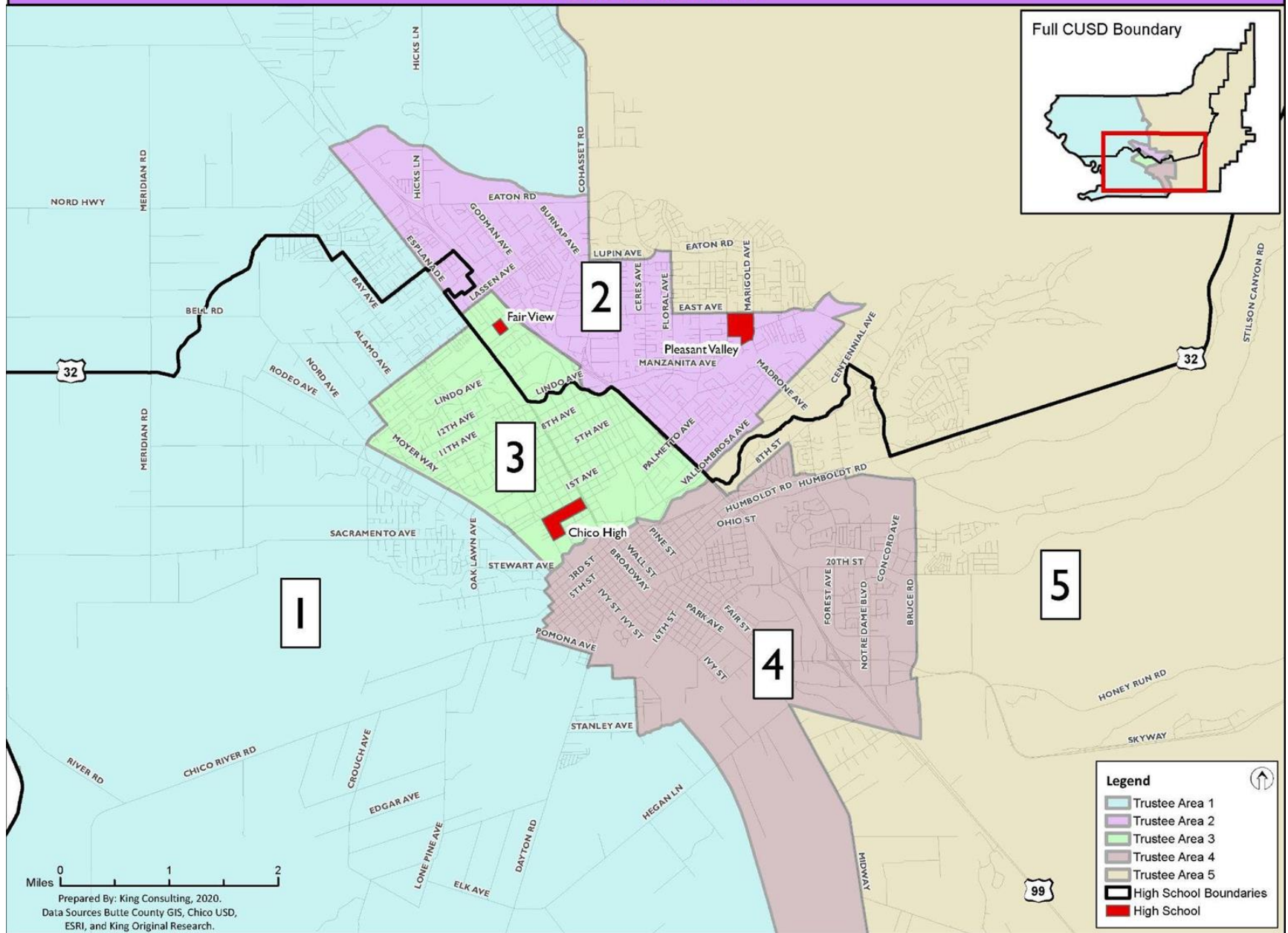
Map of Chico, California, showing five trustee areas and high school boundaries. The map is color-coded by trustee area: Trustee Area 1 (yellow), Trustee Area 2 (purple), Trustee Area 3 (light blue), Trustee Area 4 (green), and Trustee Area 5 (brown). High school boundaries are shown as black lines, and high schools are marked with red squares: Chico High, Fair View, and Pleasant Valley. The map includes major roads like Highway 32 and Highway 99, and a legend in the bottom right corner. An inset map in the top right shows the full CUSD boundary within Butte County.

Legend

- Trustee Area 1
- Trustee Area 2
- Trustee Area 3
- Trustee Area 4
- Trustee Area 5
- High School Boundaries
- High School

Draft Trustee Area Map: Purple Plan

Chico Unified School District



Data Comparison

Since the total CUSD population in the 2010 Census was 107,182, each **Trustee Area** should be within **+/- 5%** of the average of 21,436.

Map	Trustee Area	Total Population							Citizen Voting Age Population (Est.)			
		Count	Deviation	% Dev	% White	%Latino	%Asian	%Black	% White	%Latino	%Asian	%Black
Blue	1	21,195	-241	-1.1%	75.0%	15.2%	3.5%	1.7%	79.6%	12.6%	2.6%	2.8%
	2	21,681	245	1.1%	73.0%	15.6%	4.6%	2.3%	73.0%	17.0%	5.2%	3.0%
	3	20,477	-959	-4.5%	78.5%	12.4%	3.2%	1.5%	81.0%	12.2%	4.2%	1.4%
	4	22,080	644	3.0%	80.8%	11.0%	3.0%	1.2%	86.4%	9.1%	2.8%	1.0%
	5	21,749	313	1.5%	70.8%	18.3%	4.5%	1.5%	73.7%	14.3%	6.4%	3.5%
Green	1	21,779	343	1.6%	73.2%	15.8%	4.7%	2.2%	74.3%	15.8%	5.1%	2.9%
	2	20,802	-634	-3.0%	77.2%	14.1%	2.8%	1.5%	79.7%	12.6%	3.7%	1.7%
	3	20,871	-565	-2.6%	78.6%	12.4%	2.7%	1.6%	81.2%	13.1%	2.5%	2.2%
	4	21,253	-183	-0.9%	78.6%	12.6%	3.3%	1.3%	84.0%	10.0%	3.3%	1.5%
	5	22,477	1041	4.9%	70.2%	17.9%	5.4%	1.6%	74.9%	13.5%	6.8%	3.3%
Purple	1	22,364	928	4.3%	76.6%	14.4%	3.7%	1.5%	78.7%	13.8%	4.3%	1.7%
	2	20,539	-897	-4.2%	77.4%	13.5%	2.7%	1.7%	81.8%	11.3%	3.4%	1.3%
	3	21,007	-429	-2.0%	75.2%	13.9%	4.0%	2.2%	77.5%	13.7%	4.2%	2.9%
	4	22,099	663	3.1%	67.2%	20.5%	4.9%	2.0%	70.7%	16.6%	6.5%	4.2%
	5	21,173	-263	-1.2%	81.0%	10.8%	3.5%	0.9%	84.3%	10.0%	3.1%	1.8%

Socioeconomic Analysis

Chico Unified School District					
Initial Draft Trustee Area Map Socioeconomic Analysis					
Blue Plan	Trustee Area 1	Trustee Area 2	Trustee Area 3	Trustee Area 4	Trustee Area 5
2018 Median Household Income (Average of Block Groups)	\$58,540	\$48,916	\$56,042	\$73,033	\$48,618
% Free/Reduced Price Meals	60%	65%	48%	36%	70%

Green Plan	Trustee Area 1	Trustee Area 2	Trustee Area 3	Trustee Area 4	Trustee Area 5
2018 Median Household Income (Average of Block Groups)	\$58,156	\$60,642	\$42,821	\$63,355	\$61,220
% Free/Reduced Price Meals	50%	54%	63%	47%	58%

Purple Plan	Trustee Area 1	Trustee Area 2	Trustee Area 3	Trustee Area 4	Trustee Area 5
2018 Median Household Income (Average of Block Groups)	\$71,757	\$57,076	\$46,319	\$35,927	\$81,438
% Free/Reduced Price Meals	42%	60%	63%	77%	37%

Student Enrollment Analysis

Percent of Students Living in Each Trustee Area by School of Enrollment

	Trustee Areas in HS Boundaries					Trustee Areas Split between HS Boundaries					Neighborhoods				
Elementary School	Blue 1	Blue 2	Blue 3	Blue 4	Blue 5	Green 1	Green 2	Green 3	Green 4	Green 5	Purple 1	Purple 2	Purple 3	Purple 4	Purple 5
Chapman	3%	4%	1%	1%	22%	2%	2%	9%	2%	15%	1%	3%	2%	25%	1%
Citrus	4%	17%	11%	1%	1%	11%	2%	25%	1%	1%	5%	2%	24%	3%	0%
Emma Wilson	8%	42%	21%	1%	1%	31%	21%	5%	2%	1%	25%	7%	19%	4%	1%
Little Chico Creek	2%	3%	2%	3%	36%	3%	2%	3%	3%	30%	2%	3%	3%	30%	9%
Marigold	3%	1%	2%	28%	1%	1%	3%	1%	30%	1%	2%	10%	2%	1%	26%
McManus	28%	2%	2%	4%	1%	2%	14%	2%	14%	1%	2%	20%	4%	1%	10%
Neal Dow	4%	1%	6%	14%	3%	1%	4%	9%	15%	3%	2%	15%	8%	3%	4%
Parkview	2%	8%	4%	9%	13%	4%	3%	8%	3%	17%	4%	3%	4%	15%	9%
Shasta	27%	1%	25%	2%	1%	26%	28%	1%	2%	<1%	39%	9%	1%	1%	2%
Sierra View	4%	1%	6%	27%	4%	3%	5%	6%	16%	17%	4%	14%	5%	2%	23%
Hooker Oak	8%	4%	9%	5%	4%	4%	6%	16%	6%	3%	4%	7%	14%	3%	6%
Rosedale	7%	15%	11%	6%	13%	13%	8%	14%	7%	10%	10%	7%	13%	12%	8%
Other	<1%	<1%	<1%	1%	1%	<1%	<1%	<1%	1%	1%	<1%	<1%	1%	1%	1%

Junior High School	Blue 1	Blue 2	Blue 3	Blue 4	Blue 5	Green 1	Green 2	Green 3	Green 4	Green 5	Purple 1	Purple 2	Purple 3	Purple 4	Purple 5
Bidwell	71%	10%	30%	45%	6%	34%	49%	13%	60%	6%	42%	60%	18%	6%	40%
Chico Jr	16%	74%	52%	14%	29%	51%	34%	68%	13%	23%	40%	18%	68%	36%	12%
Marsh	12%	13%	16%	40%	61%	13%	16%	16%	26%	68%	16%	20%	11%	54%	48%
Other	2%	3%	1%	1%	4%	2%	1%	3%	1%	3%	1%	1%	3%	4%	1%

High School	Blue 1	Blue 2	Blue 3	Blue 4	Blue 5	Green 1	Green 2	Green 3	Green 4	Green 5	Purple 1	Purple 2	Purple 3	Purple 4	Purple 5
Chico High	30%	72%	61%	26%	55%	53%	46%	69%	24%	48%	48%	29%	70%	57%	31%
Pleasant Valley	62%	17%	34%	69%	34%	41%	47%	21%	70%	43%	46%	61%	22%	30%	65%
Other	8%	10%	6%	5%	11%	7%	7%	9%	6%	10%	5%	10%	9%	14%	4%

Summary and Considerations

Summary

- *Legal Requirements*
- *Empirical Evidence of Historical Racially Polarized Voting*
- *Overview of Process in 2020, prior to COVID-19 and Governor's emergency orders*
- *Reviewed Criteria (Legal Requirements and Community Input)*
- *Reviewed Maps, Data and Analysis for Initial Scenarios*

Considerations

- *New Board Members*
- *New Census Data (by September 30, 2021)*
- *Increased Public Input as In Person Meetings Resume - Critical to this Process*



Questions/Discussion

CHICO UNIFIED SCHOOL DISTRICT

TRUSTEE AREA ESTABLISHMENT PROCESS & PUBLIC OUTREACH MEETING #1

SEPTEMBER 1, 2021

Presented by:

Paul R. Gant, Partner, Kingsley Bogard
Jamie King-Iseman, President, King Consulting
Rob Murray, Director, King Consulting



Proposed Timeline

Date	Action
September 1, 2021	Public Outreach Meeting #1
September 15, 2021	Public Outreach Meeting #2
October 20, 2021	Presentation of Draft Trustee Area Maps
November 3, 2021	First Hearing on Draft Maps
November 17, 2021	Second Hearing on Draft Maps after incorporating feedback from First Hearing.
By November 24, 2021	Final map options based on all Board and public feedback to be posted on District website
December 15, 2021	Board to adopt map
TBD	Approval of trustee area map by County Committee on School District Reorganization (County of Board of Education)
TBD	State Board of Education approval of CUSD waiver of election, which automatically establishes trustee area elections
TBD	The first election to use the trustee areas must be held more than 120 days after trustee areas are established by the State Board of Education

Purpose of Public Outreach Meetings

1. General Requirement
2. Importance of Community Input
3. Understand community priorities and considerations
4. Community members submit input many ways:
 - a. *Public comment at either meeting.*
 - b. *Submit written input or upload documents or maps via the District website.*
5. Community input is reviewed and considered in the development of
Trustee Areas

Considerations When Developing Trustee Areas

- United States Census geography, especially block groups, will form the foundation of CUSD Trustee Area creation.
- Communities of Interest to Consider:
 - *Chico neighborhoods*
 - *CUSD school boundaries*
 - *U.S. Census demographic concentrations*
 - *Butte County voting precincts*
 - *Other?*
- Prominent Boundaries to Consider:
 - *Highways and major roads*
 - *Rivers and creeks*

Questions for the Community

- Are you part of a community of interest?
- Can you identify on a map where your community is located?
- What area(s) do you think should be combined together so common interests can best be represented with a single Trustee?
- What area(s) do you think should be divided into multiple Trustee Areas in order to increase Trustee representation?
- What other criteria should be considered?

How to Provide Input

- Submit a form to speak at either Public Outreach Meeting.
 - *Your comments will be recorded.*
- Please use the Chico USD website ([link](#)) to provide your valuable input on criteria that should be considered when developing Chico USD's Trustee Areas.
- Maps are also provided on the website at different scales to assist you in defining areas that should be grouped together.
 - *You can also suggest Trustee Areas if desired.*

Public Comment